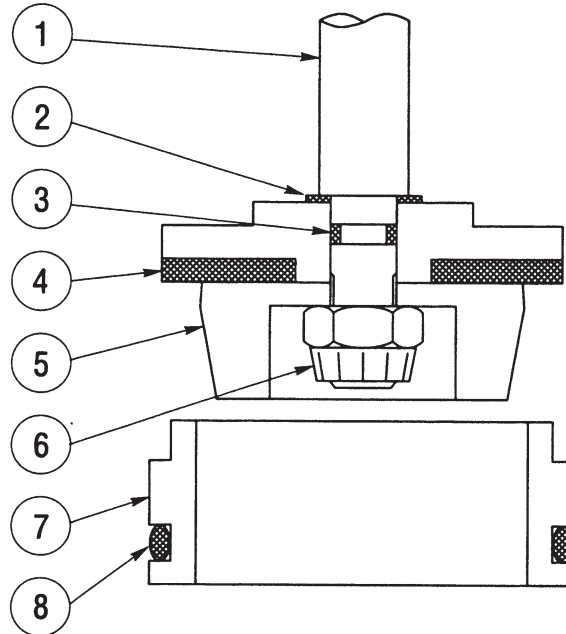


ORDERING INFORMATION



Replacement 415 and 416 series trim components should be ordered individually from the chart below.

Item	Notes	Description	Qty.	Part No.
1		Stem, 303 Stainless (Std.) - 415 only	1	45001936
		Stem, 316 Stainless - 415 only	1	45010549
		Stem, 303 Stainless (Std.) - 416 only	1	45011947
		Stem, 316 Stainless - 416 only	1	45015607
2		Copper Gasket (Pre-1994 Stems)	1	45001942
3		O-Ring, BUN-010-90 (Std.) (Post 1994 Stems)	1	67101327
		O-Ring, VIT-010-90 (Post 1994 Stems)	1	67306110
4		Plug, Viton on 416 Stainless	1	45001851
		Plug, Viton on 316 Stainless	1	45015609
5	*	Throttle Nose, 1-1/4" 303 Stainless (Std.)	1	45015538
	*	Throttle Nose, 1-1/4" 316 Stainless	1	45015615
	*	Throttle Nose, 1-3/4" 303 Stainless (Std.)	1	45015539
	*	Throttle Nose, 1-3/4" 316 Stainless	1	45015617
6		Nut, 3/8-24 Thin Flexloc	1	65003075
7		Seat Ring, 1-1/4" 303 Stainless (Std.)	1	45003161
		Seat Ring, 1-1/4" 316 Stainless	1	45015614
		Seat Ring, 1-3/4" 303 Stainless (Std.)	1	45006687
		Seat Ring, 1-3/4" 316 Stainless	1	45010607
8		O-Ring, BUN-226-90 (Std.)	1	67101534
		O-Ring, VIT-226-75	1	67307580

*Omit Throttle Nose for Quick Opening Trim.