

DESCRIPTION

The NUTECH Model 20RI is a panel-mounted, pilot-operated, two-way indicating pneumatic relay normally used as a first-out indicating and control device. It receives a pressure signal from an end device. When the signal pressure from the end device is reduced, the spool shifts, and the control signal is exhausted. The affected relay displays a “red” indication.

FEATURES

Manifold design allows close coupling of individual relays within a group, thus reducing space requirements; also provides reduction in installation cost by reducing installation labor and the number of fittings required.

The optional bypass valve further reduces cost with its “fitting-free” mounting.

Screw-on rear cap assembly provides for simplified field maintenance.

Routine maintenance procedures can be performed without removing the device from its mounting in most applications.

SPECIFICATIONS

Operating pressure range	25-50 psig
Material	316 SS per ASTM A-276
O-ring	Viton®, Temp. range: -15°F to+400°F (std.) BUNA-N, Temp. range: -65°F to+215°F (opt.) HNBR, Temp. range: -40°F to +325°F (opt.)
Length (with lens)	6.10”
Diameter	1.50”
Height (with manifold)	2.26”
(with bypass valve)	3.70”
Connections	1/4” FNPT
Weight (with manifold)	3.0 lb
(with bypass valve)	3.5 lb



Model 20RI Receiving Indicating Relay

Model 20RI Receiving Indicating Relay

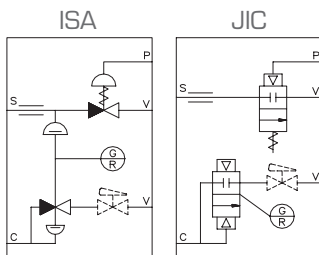
ORDERING INFORMATION

Item	Qty.	Description	Part/Assy #
1	1	Body	N59941
2	1	Spool Sub-Assembly w/O-rings	N5901
3	1	Cap	N59943
4	1	Panel Nut	N72697
5	1	Spring	N66984
6	1	Lens (Red)	N5995R
7	1	O-ring	122
8	1	O-ring	020
9	3	O-ring	008
10	1	Insert Guide Sub-Assembly	N5902
11	1	Piston Vent Valve	N59944
12	1	Manifold (Note 2)	--
13	1	Screw, Soc. Head, SS w/Lock Washer	SB001/LW001
14	1	Orifice (.032"dia.)	N599423
		Repair Kit	N6000

NOTES:

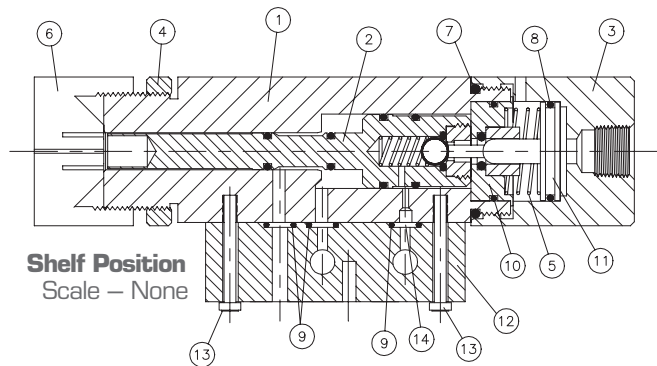
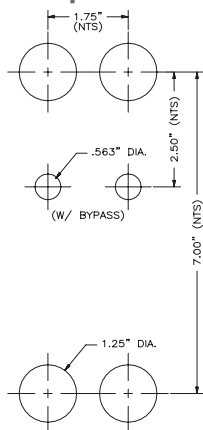
- Standard O-ring material is Viton®. BUNA-N is available as an option.
- See manifold drawings for more details.

Schematic Representations

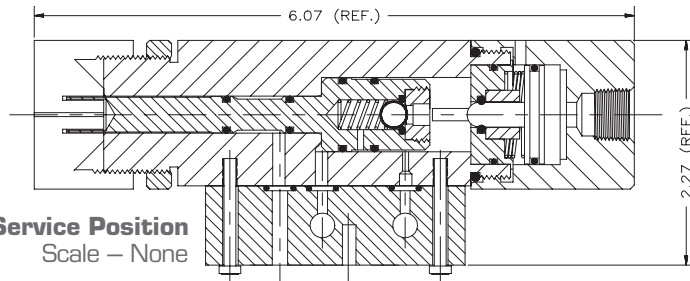


Relay Shown In Service
(Green)

Panel Mounting Requirements



Shelf Position
Scale – None



In-Service Position
Scale – None

Bypass valve is optional. Vent Port, 1/8"FNPT. Available if valve is not required.