

DESCRIPTION

The NUTECH Model 20TI is a panel-mounted, pilot-operated, two-way indicating pneumatic relay normally used as a first-out indicating and control device. It transmits a pressure signal to a normally closed vent-type end device. When the end device opens (trips), the transmitted pressure signal is reduced, allowing the spool to shift and the control signal to be exhausted. The affected relay displays a “red” indication.

FEATURES

Manifold design allows close coupling of individual relays within a group, thus reducing space requirements; also provides reduction in installation cost by reducing installation labor and the number of fittings required.

The optional bypass valve further reduces cost with its “fitting-free” mounting.

Screw-on rear cap assembly provides for simplified field maintenance.

Routine maintenance procedures can be performed without removing the device from its mounting in most applications.

SPECIFICATIONS

Operating pressure range	25-50 psig
Material	316 SS per ASTM A-276
O-ring	Viton®, Temp. range: -15°F to+400°F (std.) BUNA-N, Temp. range: -65°F to+215°F (opt.) HNBR, Temp. range: -40°F to +325°F (opt.)
Length (with lens)	6.10”
Diameter	1.50”
Height (with manifold)	2.26”
(with bypass valve)	3.70”
Connections	1/4” FNPT
Weight (with manifold)	3.0 lb
(with bypass valve)	3.5 lb



Model 20TI Transmitting Indicating Relay

Model 20TI Transmitting Indicating Relay

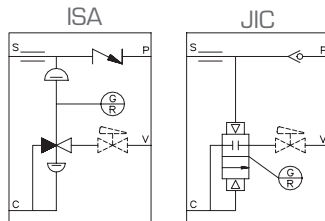
ORDERING INFORMATION

Item	Qty.	Description	Part/Assy #
1	1	Body	N59941
2	1	Spool Sub-Assembly w/O-rings	N5903
3	1	Cap	N59943
4	1	Panel Nut	N72697
5	1	Spring	N66985
6	1	Lens (Red)	N5995R
7	1	O-ring	122
8	2	O-ring	020
9	3	O-ring	008
10	1	O-ring	014
11	1	Check Valve	N59964
12	1	Check Valve Housing	N6022
13	1	Manifold (Note 2)	--
14	2	Screw, Soc. Head, SS w/Lock Washer	SB001/LW001
15	1	Orifice (.032" dia.)	N599423
		Repair Kit	N6000

NOTES:

- Standard O-ring material is Viton®. BUNA-N is available as an option.
- See manifold drawings for more details.

Schematic Representations



Relay Shown In Service
(Green)

Panel Mounting Requirements

