

CHAPTER 26

Quick Exhaust Relays

DESCRIPTION

The NUTECH model 20CX1 is a quick exhaust relay used in pneumatic systems to provide rapid venting of pneumatic signals. Typical applications include use on well SSVs and process SDVs.

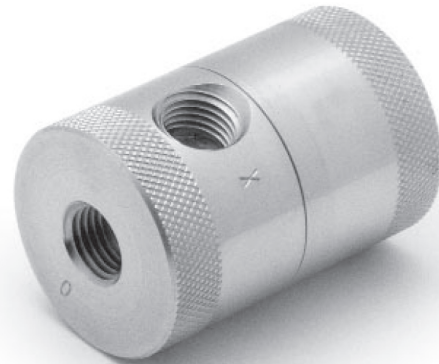
FEATURES

Simple design provides high reliability at low cost.

Screw-on rear cap assembly provides for simplified field maintenance.

SPECIFICATIONS

Operating pressure range	40-125 psig
Material	316 SS per ASTM A-276
O-ring	Viton [®] , Temp. range: -15°F to + 400°F (std.) BUNA-N, Temp. range: -65°F to + 215°F (opt.) HNBR, Temp. range: -40°F to +325°F (opt.)
Length	2.21"
Diameter	1.50"
Connections	1/4" FNPT
Weight	1.1 lb



Model 20CX1 Quick Exhaust Relay

Model 20CX1 Quick Exhaust Relay

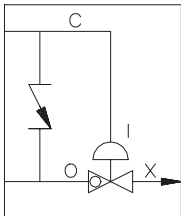
ORDERING INFORMATION

Item	Qty.	Description	Part/Assy #
1	1	Body	N66524
2	1	Cap	N66522
3	1	Spool Sub-Assembly w/O-rings	N66511
4	1	O-ring	122
		Repair Kit (Note 1)	N2000

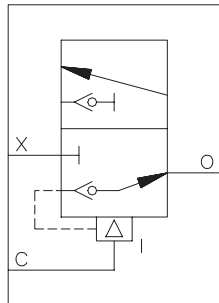
NOTES:

- Standard O-ring material is Viton®. BUNA-N is available as an option.

ISA

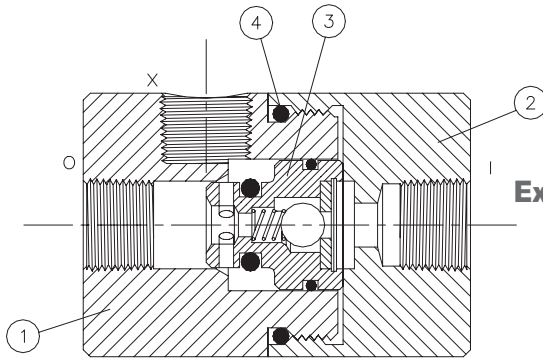


JIC



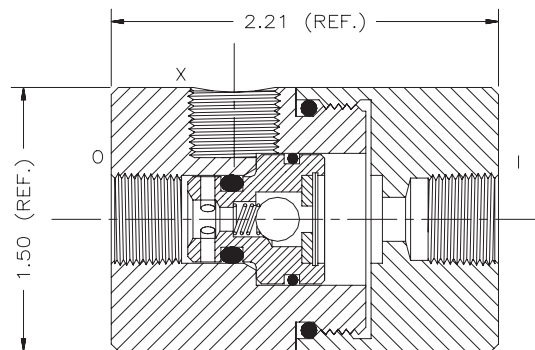
I = Inlet
O = Outlet
X = Exhaust

Schematic Representations



Exhaust Position
 Scale – None

I = Inlet
O = Outlet
X = Exhaust



In-Service Position
 Scale – None